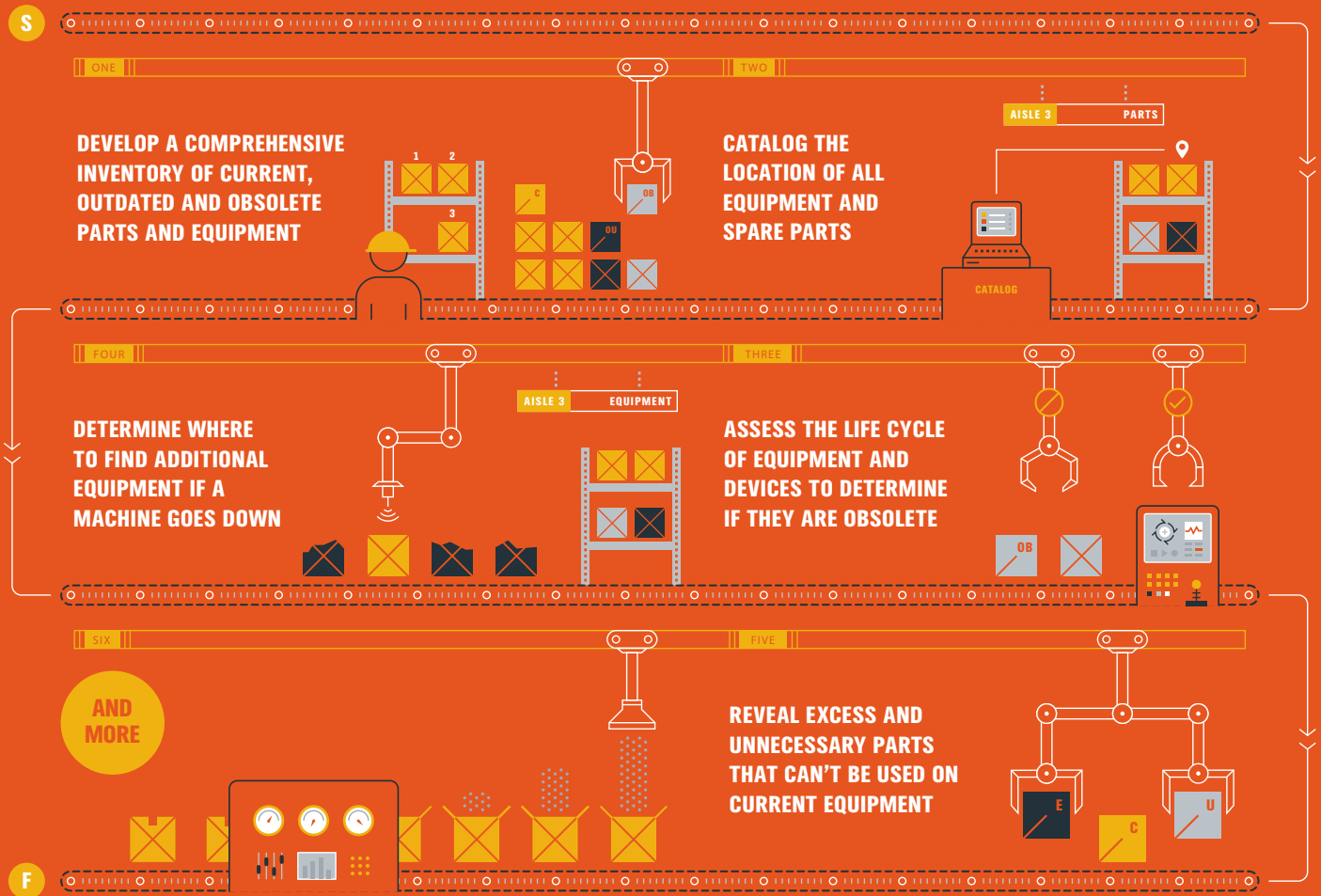


**A** **AUTOMATION ARCHITECTURE ASSESSMENT**

# ARE YOU CONFIDENT IN THE TECHNOLOGY YOU HAVE IN PLACE?

When you're busy operating a plant, you don't have time to think about one piece of equipment, or if there is a spare part for it. But tomorrow that device could cost you valuable downtime.

**AN INSTALLED BASE EVALUATION (IBE) FROM VAN METER IS AN IN-PERSON PANEL-BY-PANEL AUDIT THAT CATALOGS WHERE YOUR INDUSTRIAL EQUIPMENT IS LOCATED, IDENTIFIES YOUR HIGHEST DOWNTIME RISKS AND PINPOINTS WHICH DEVICES MAY BE OBSOLETE. DURING THE EVALUATION, WE'LL:**



Once the evaluation is complete, we'll offer strategies to help you plan ahead to manage storerooms and spare parts efficiently, avoid downtime due to equipment obsolescence, and determine where and when equipment migrations should begin.