

**KILLARK®**

# Hazardous Area Solutions

Robust & reliable electrical products  
and area lighting





## **Van Meter partners with Killark**

Specializing in robust and reliable electrical products, Killark's wide range of solutions meet the stringent safety standards required for harsh and hazardous locations. Our partnership with Van Meter ensures that your projects benefit from superior performance and enhanced safety.

### **Over 100 years of innovation and quality**

Based in Missouri for over a century, we focus on engineering solutions that provide safety and reliability in the toughest climate extremes. Our new centralized 160,000 sq ft facility opened in 2019. Here we integrate manufacturing operations, offices, and warehouse under one roof, optimizing material flow and maximize production output.

### **Onsite testing capabilities**

Our dedicated testing center operates a variety of explosion tests, including oxygen enriched acetylene explosions. We're ISO 17025 accredited for almost 400 test clauses to validate our product performance. We concentrate on electrical, thermal, and environmental testing, ranging from rain all the way to simulated hurricanes. Our talcum dust chamber is the largest in the U.S.

# Customer Service

Our goal is to build a strong partnership with you. Our inside sales team provides timely, accurate feedback to all inquiries. We meet and exceed customer expectations.

## Inside Sales Support

- Competitive Cross Reference Assistance
- Fast and Accurate Quotations
- Expedited Order Follow-Up / Fulfillment

## Application Support

- Site and Area Lighting Layouts
- Hazardous Location Fundamental Assistance
- Custom Assembly Design and Support

## Technical Support

- Competitive Cross Reference Assistance
- Fast and Accurate
- Quotations
- Expedited Order Follow-Up / Fulfillment
- Site and Area Lighting Layouts
- Hazardous Location Fundamental Assistance
- Custom Assembly Design and Support
- Engineered-to-Order (ETO) Custom Developer Tool
- Lighting Design/ Calculation Software Tools
- designHUBB / connectHUBB Custom
- Enclosure / Cable Gland
- Application

---

## Markets

Our comprehensive range of product designs and solutions cater to a wide variety of worldwide applications. These products are compliant to North American, European, and international standards. Harsh & Hazardous products engineered specifically for extreme temperature applications ensure safety and reliability. Achieve higher cost savings with our products that install quickly and provide energy efficiency.



**Water and Wastewater**



**Drilling**



**Renewables**



**Food and Beverage**



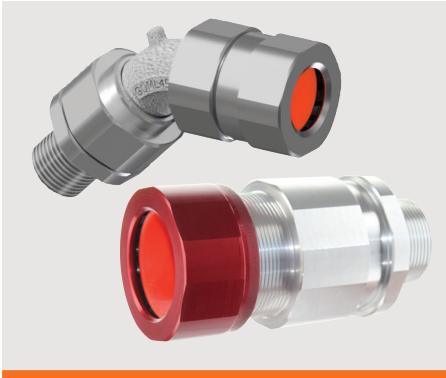
**Power Generation**



**Oil and Gas**

# Product categories

## Electrical & Electronic



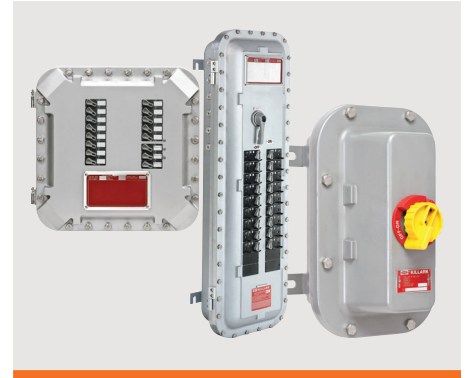
### Cable Glands

Durable, cost-effective glands meet or exceed industrial & hazardous location test requirements and safety standards.



### Controls

Control stations and accessories for explosive environments allow safe control and distribution of electrical energy.



### Distribution

Disconnect switches with QUAD labeling for UL, CSA, ATEX and IEC Ex d are suitable for worldwide applications.



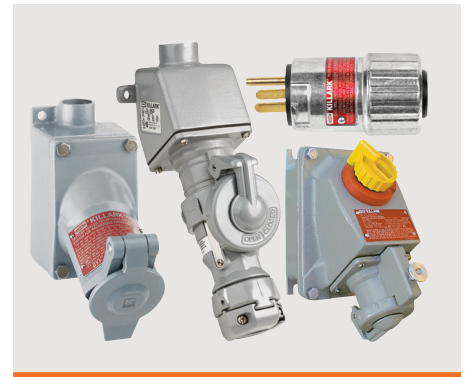
### Enclosures

Our extensive line of bolted and threaded models is used in control, monitoring, detection, and automation products.



### Fittings

Conduit bodies, hubs, flexible couplings, unions, reducers & adapters, drains & breathers, plugs, covers, and gaskets.



### Wiring Devices

Our comprehensive range of explosion-proof wiring devices includes connectors, plugs, and receptacles.

## Lighting & Controls



### Harsh & Hazardous Lighting

Our vast range of lighting products for corrosive, hazardous locations provide designed-in safety and durability.



### Industrial Lighting

Our industrial lighting includes long-lasting, cost-effective linear, flood, and emergency lights for all your needs.

# New & Noteworthy

## Fittings



### CGB

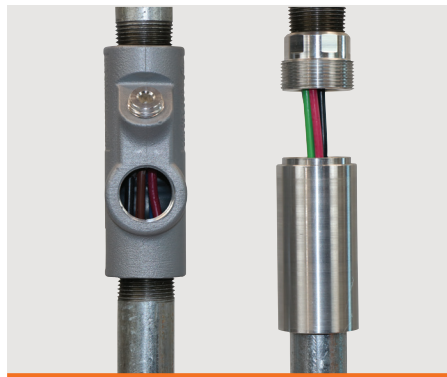
CGB cable glands with onsite removable grommet sleeves accommodate various sizes of unarmored cables or cords in industrial and hazardous applications.



### Unions

Our next generation hazardous-rated unions feature a unique design that's smaller and stronger to provide critical clearances for equipment.

## Labor Savings



### EZ Seal

The sleek, revolutionary EZ seal provides unimpeded access to the potting chamber to reduce installation time and eliminates packing fiber.w



### Spartan Pole

Enables safe, easy access to pole-mounted lights by retracting to a serviceable level, eliminating the need for costly fall arrest or lift systems to meet OSHA/HSE height standards.

## Lighting



### VML-X

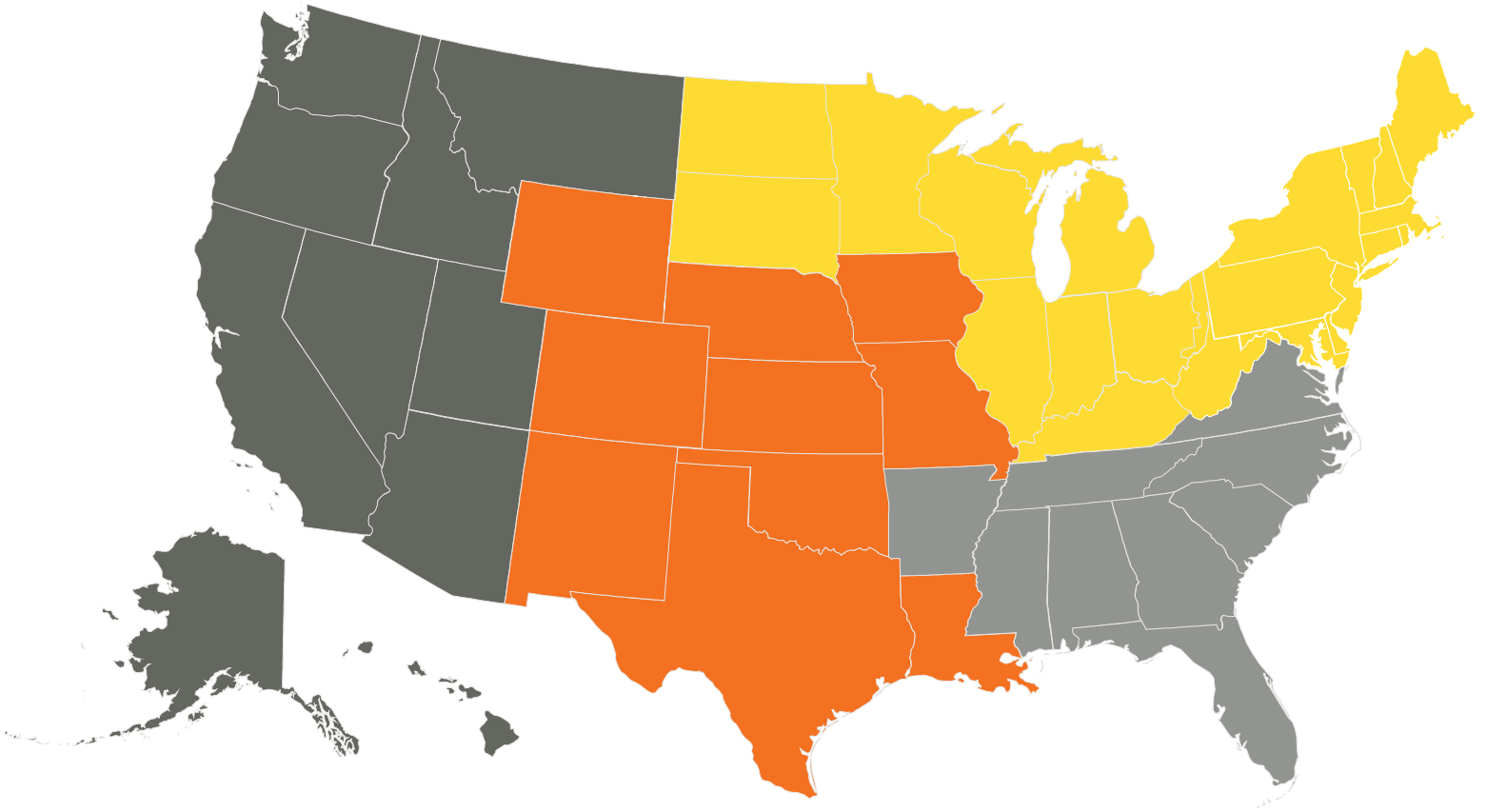
Engineered for maximum safety, VML-X hazardous location LED high and low bay light fixtures offer the widest range of certified configurations available.



### VMLX-C

The same trusted certifications and reliability of our VML-X, now made to easily retrofit your existing competitor mount.

# Points of Contact



## Steve Readnour

West Region RVP  
sreadnou@hubbell.com  
630-269-0470

## Troit Freeland

Central Region RVP  
tfreeland@hubbell.com  
815-751-0026

## Joe Donnelly

Northeast Region RVP  
jdonnell@hubbell.com  
609-707-0403

## Gregg Ewing

Southwest Region RVP  
gewing@hubbell.com  
303-408-4627

## Mike Pisacreta


Southeast Region RVP  
mpisacre@hubbell.com  
203-258-9657


# KILLARK®


Your preferred hazardous location electrical  
solution partners

## GET IN TOUCH:

 [killarkinfo@hubbell.com](mailto:killarkinfo@hubbell.com)

 314-531-0460

 [killark.com](http://killark.com)

 2112 Fenton Logistics Park Blvd.,  
Fenton, MO 63026



©2024 Killark. All rights reserved.  
Hubbell and the Hubbell logo are registered trademarks or trademarks of Hubbell  
Incorporated. All other trademarks are the property of their respective owners.

CORP-HUBB-BR-EN-02292 | 07/2024